

## **MANAGEMENT UNIT 31: Slate Creek - Chisna River**

### **Background**

This unit consists of state-owned and state-selected land in the upper Chistochina River drainage with moderate to high mineral potential. The Slate Creek - Chisna River area is intensively mined and has numerous patented mineral surveys and state mining claims. Access is via the Chistochina Trail for heavy equipment and via air for people and freight. There are numerous private airstrips in the area. The area is mountainous terrain above treeline. It has been mined since the early 1900s; primary minerals produced are gold and silver.

### **Management Intent**

This unit will be retained in state ownership for multiple use with emphasis on mining and will remain open to mineral entry. There are numerous mining claims in the Slate Creek and Chisna River valleys. Wildlife Habitat is also designated a primary use because much of the land in this unit is not mined and provides habitat for wildlife.

### **Management Guidelines**

The complete set of management guidelines is presented in Chapter 2. Any of the guidelines could apply to uses within this management unit; however, guidelines that are most likely to apply are:

- Materials
- Subsurface resources

**LAND USE DESIGNATION SUMMARY  
MANAGEMENT UNIT: 31 - Slate Creek**

SUBUNIT	LAND OWNERSHIP (GENERALIZED)	LAND USE DESIGNATIONS				PROHIBITED SURFACE USE(S)*	COMMENTS
		SURFACE		SUBSURFACE			
		PRIMARY USE(S)	SECONDARY USE(S)	LOCATABLE MINERALS	LEASEABLE MINERALS		
31	State, state selected	Minerals Wildlife habitat		Open to mineral entry	Available for leasing	Land offerings Remote cabins	Slate Creek - Chisna River mining area

\* Other uses such as material sales, land leases, or permits, that are not specifically prohibited may be allowed. Such uses will be allowed if consistent with the management intent statement, the management guidelines of this unit, and the relevant management guidelines listed in Chapter 2.

# RESOURCE INFORMATION SUMMARY

## Management Unit 31 - Slate Creek - Chisna River

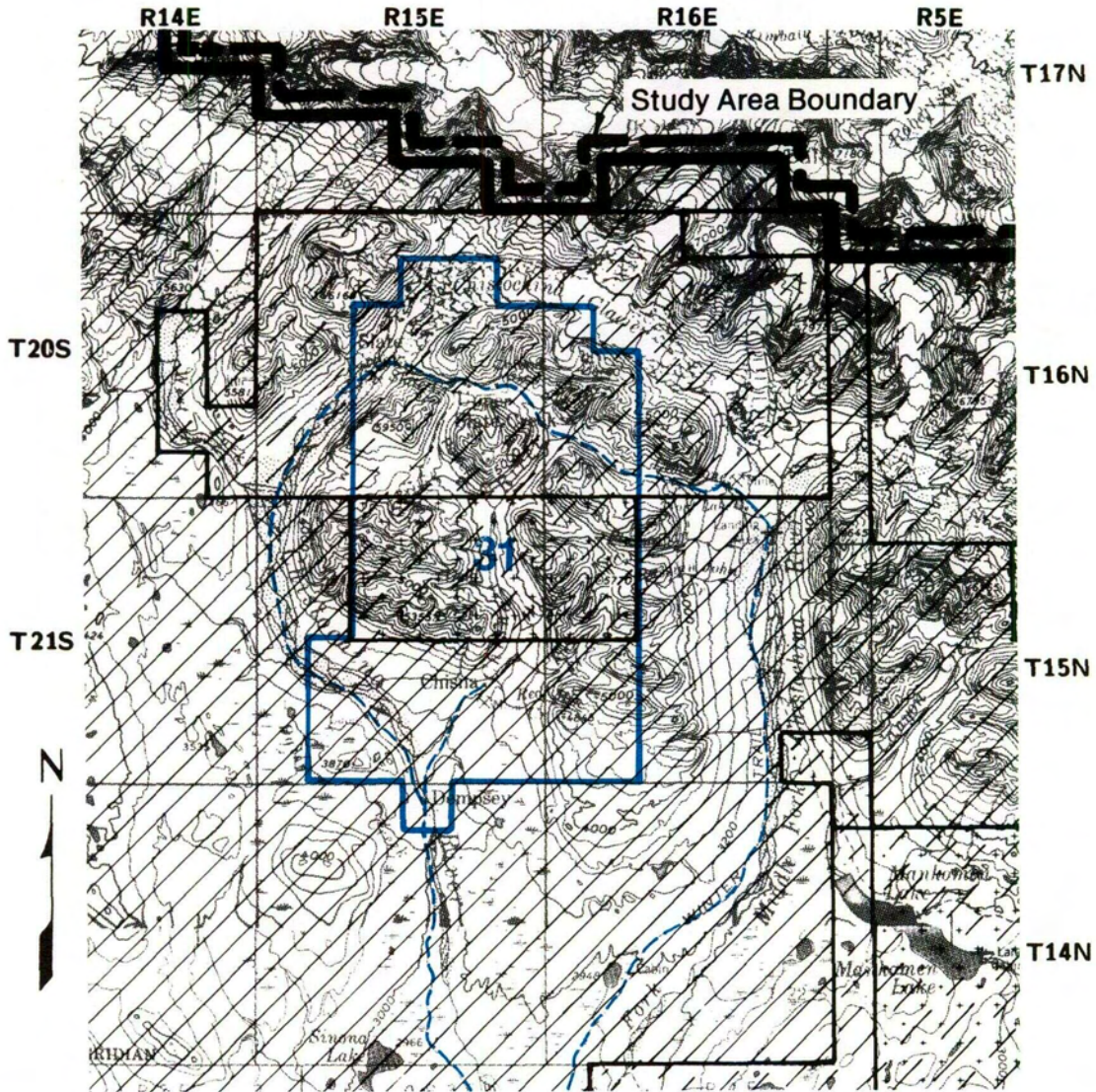
RESOURCE	SUBUNIT
	31A
Fish	none documented
Forestry	unsuitable
Historic-Cultural	high for mining history
Minerals	moderate to high; active placer mining for gold
Oil and Gas	unknown
Recreation	moderate - hiking potential but remote
Settlement Suitability	low
Transportation	several private airstrips and mining roads
Wildlife	A-2 habitat - moose; B-2 habitat

Important trails: Access via Chistochina River trail system (see management unit 29).

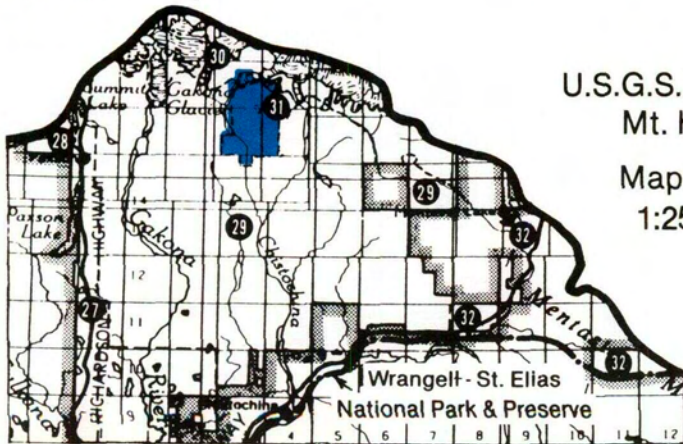
For definitions of ratings, see glossary. For more detailed information on any resources, see resource elements published under separate cover.

# MANAGEMENT UNIT 31

## Slate Creek




Location Map



U.S.G.S. Quad:  
Mt. Hayes

Map scale:  
1:250,000

-  State Owned
-  State Selected
-  Native/Private Owned
-  Native Selected
-  Federal
-  Trails on public lands

Map shows approximate location of easements to state land and major trails across state land. Portions of trails may cross private lands. See appendix D.