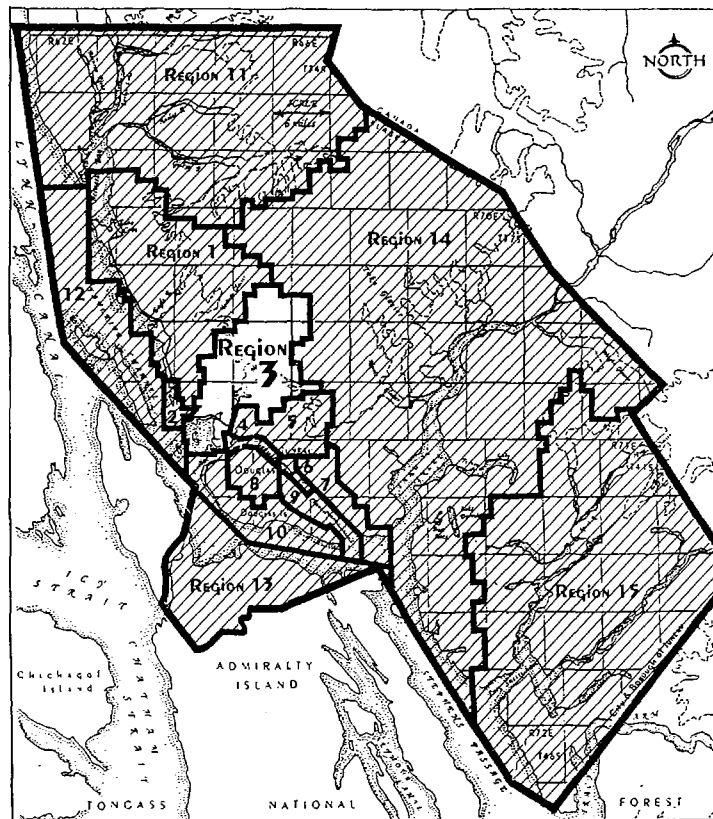


## Region 3 - Auke Bay/Mendenhall Peninsula

### Background

This region includes a diverse shoreline and protected inland waters between Point Louisa and the tip of the Mendenhall Peninsula. Most of the state lands in this region are tidelands and submerged lands. State-owned and state-selected uplands include Coghlan and Indian islands along Montana Creek and Jordan Creek. State-owned shorelands include Mendenhall Lake and River and Auke Lake. Because of the semi-protected waters adjacent to the road system, there are a number of facilities built on state tidelands and submerged lands. The marine waters in this region receive heavy use navigation, anchoring, and mooring. There are also a number of private and public docks and floats in this unit. The region also offers opportunities for viewing wildlife and scenery and contains high habitat values.

The National Oceanic and Atmospheric Administration (NOAA) and the University of Alaska-Southeast (UAS) marine research facilities are located at the head of Auke Bay. The area between Indian Point and the Mendenhall Peninsula is recommended as an AMSA by the CBJ Coastal Management Plan. Because of steep terrain, the state uplands in this unit are mostly unsuitable for development and primarily support recreation, watershed-related uses, and habitat. The state shorelands under Auke Lake and the Mendenhall River and Lake have primarily recreation, research, and habitat values. Most of this unit is within an area that the US Bureau of Mines has found to have high mineral potential.



### Location Map



# REGION 3 - Auke Bay/Mendenhall Peninsula

