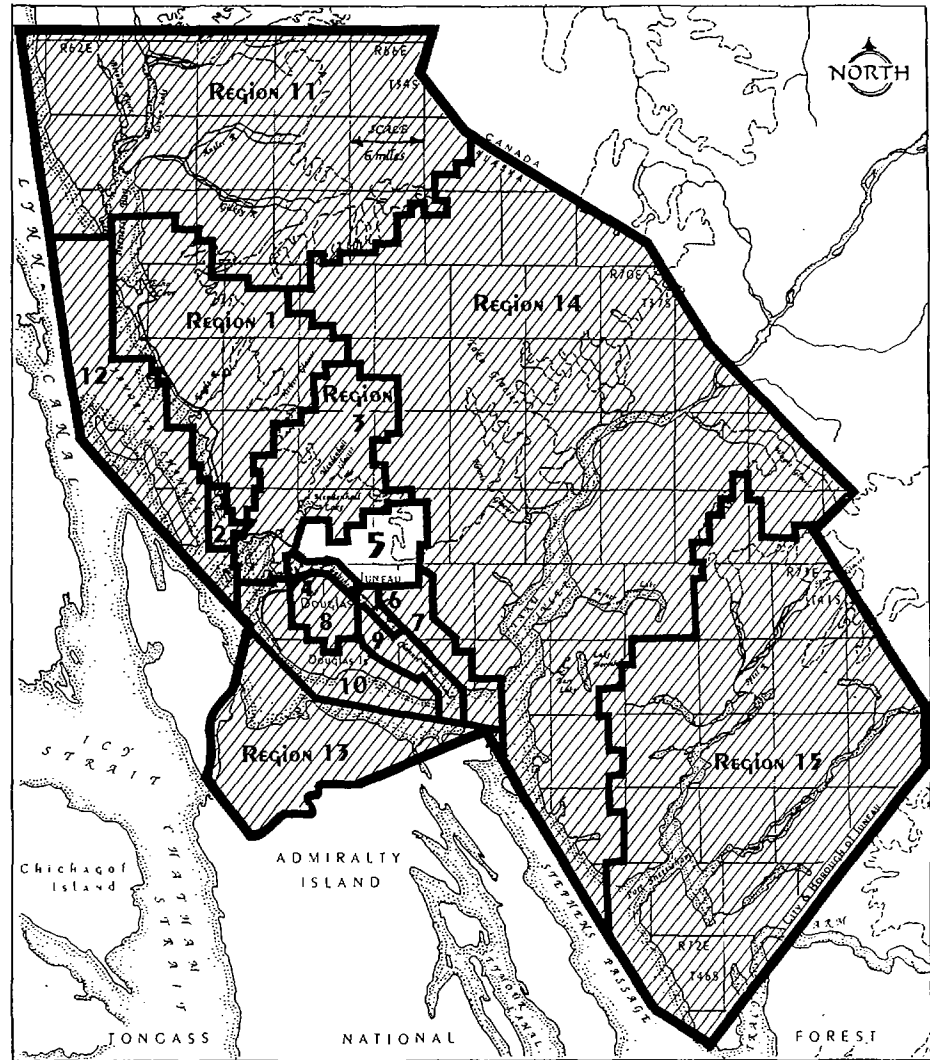


Region 5 - Lemon Creek / Salmon Creek

Background

This region includes the state-owned and selected uplands in the Lemon Creek and Salmon Creek drainages. It also includes the Twin Lakes shorelands. With the exception of the Lemon Creek Correctional Facility, most of these lands are currently undeveloped although they are quite accessible from existing roads. Lands in the Mendenhall Valley were selected by the state from the U.S. Forest Service for their values for community expansion (NFCG 007).



Location Map

REGION 5-Lemon Creek / Salmon Creek

