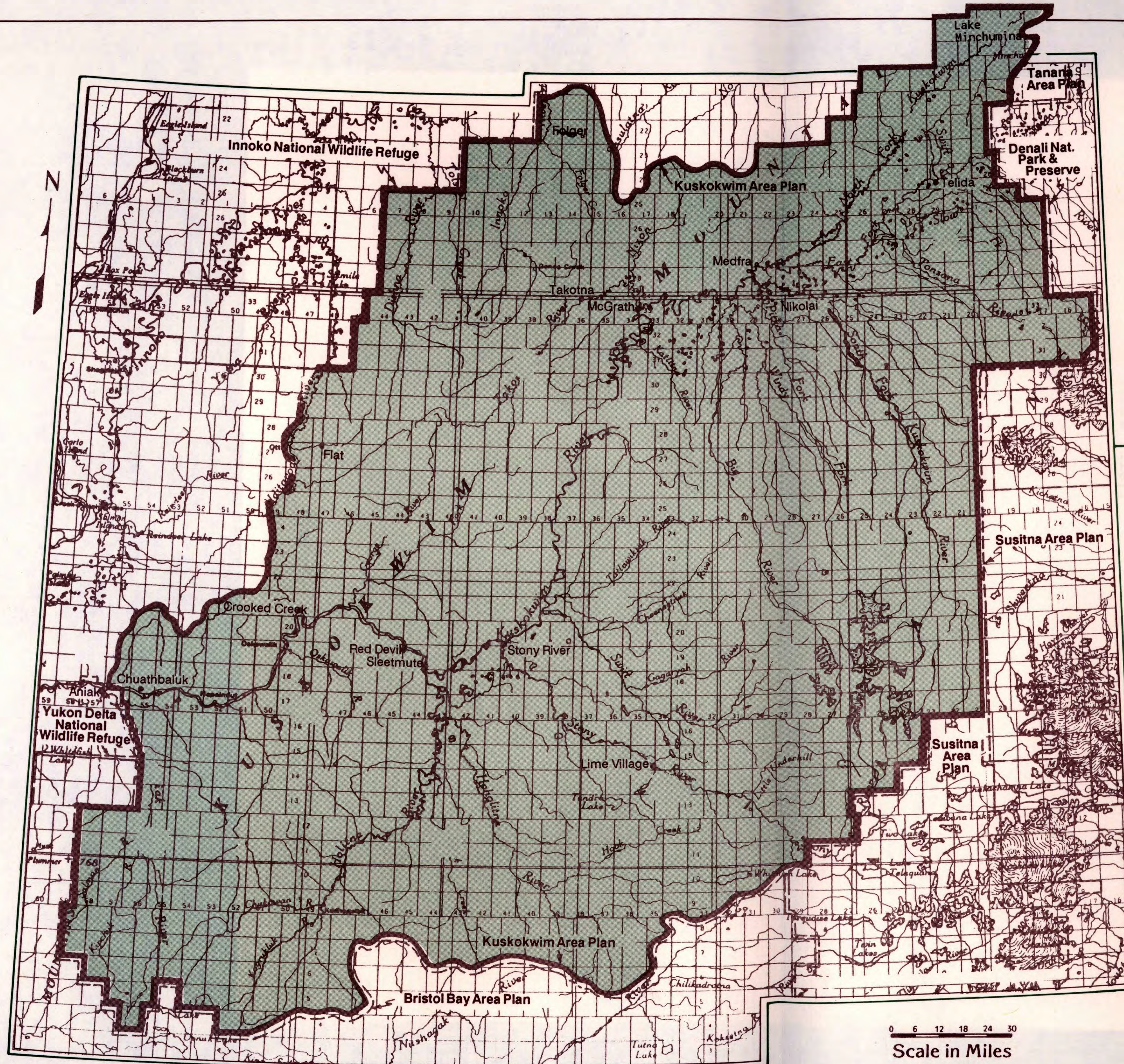


Location Map

MAP 1.1



The Kuskokwim planning area includes all the lands in the Kuskokwim River Basin upriver from Aniak. It also includes the parts of the Iditarod and Innoko river basins around Flat, Ophir, and Folger. The plan is only for state-owned and state-selected lands within this area. There are about 1800 year-round residents in the planning area. Most people live in the communities of Aniak, Chuathbaluk, Crooked Creek, Red Devil, Sleetmute, Stony River, Lime Village, McGrath, Takotna, Nikolai and Telida.

