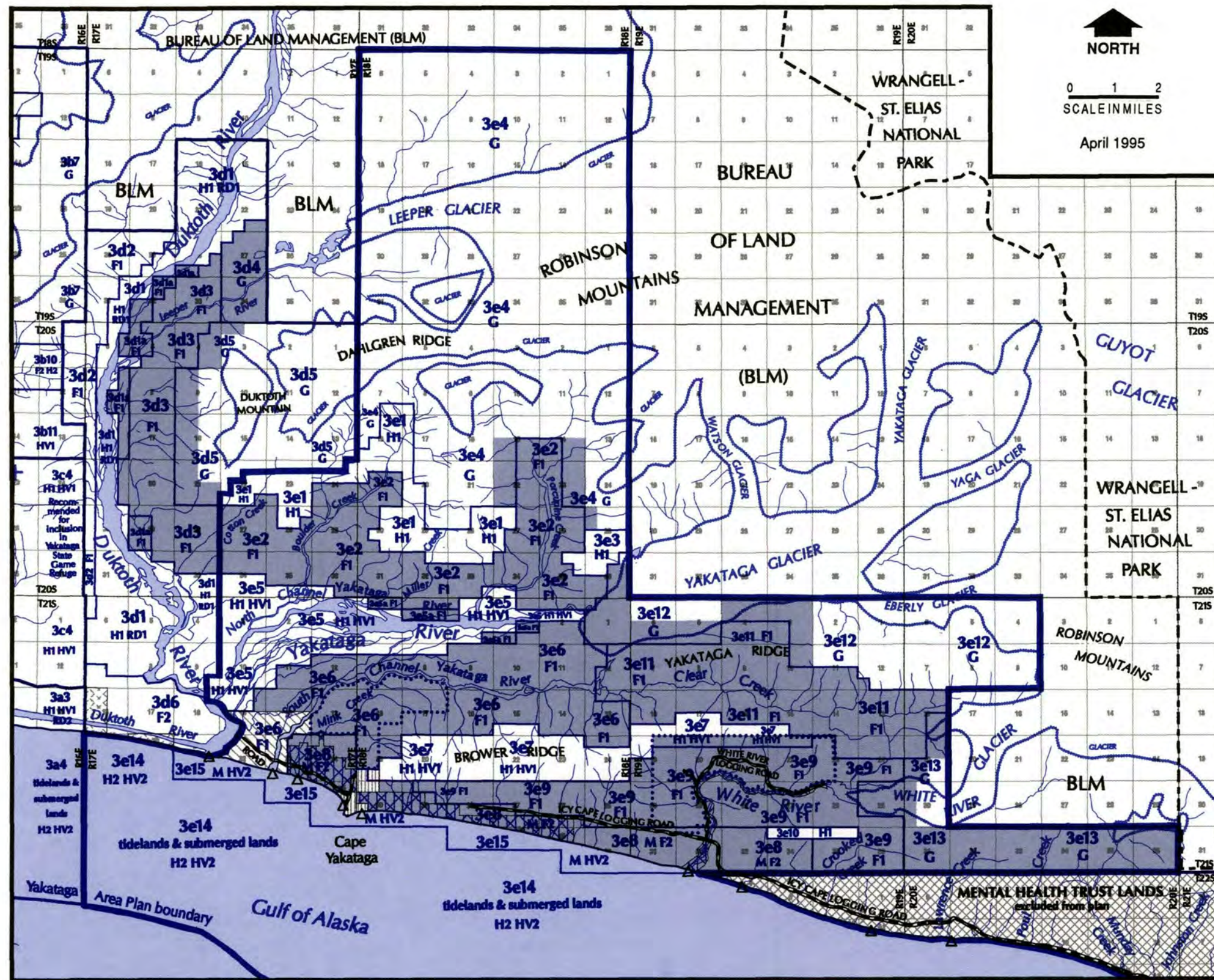


**Unit 3E**

**northern part of Yakataga & White rivers - upland units and University Timber Rights in Units 3D & 3E**



**YAKATAGA AREA PLAN**

**Unit 3E** northern part of Yakataga & White rivers - upland units and University Timber Rights in Units 3D & 3E

**PLANNING UNITS**

- management unit boundary
- 1a1 subunit boundary and number

**LAND STATUS**

**STATE OWNED OR SELECTED: SUBJECT TO PLAN**

- NO PATTERN state owned - patented or tentatively approved
- [Cross-hatch pattern] state selected and federal mining claims
- [Solid blue] state owned - University Timber Rights, substitute tract
- [Dotted blue] state owned - University Timber Rights, tracts 20 and 154

**STATE OWNED BUT EXCLUDED FROM PLAN**

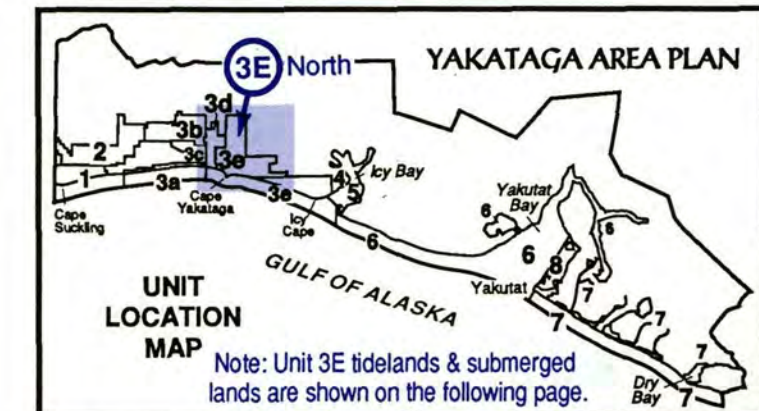
- [Diagonal lines] University owned
- [Cross-hatch pattern] Mental Health Trust land

**OTHER LAND OWNERSHIP**

- [Diagonal lines] Native owned - patented or interim conveyed
- LABELED federal (BLM, National Park)
- [Dashed line] federal conservation system unit boundary
- [Vertical lines] private, including Native Allotments

**MAP FEATURES**

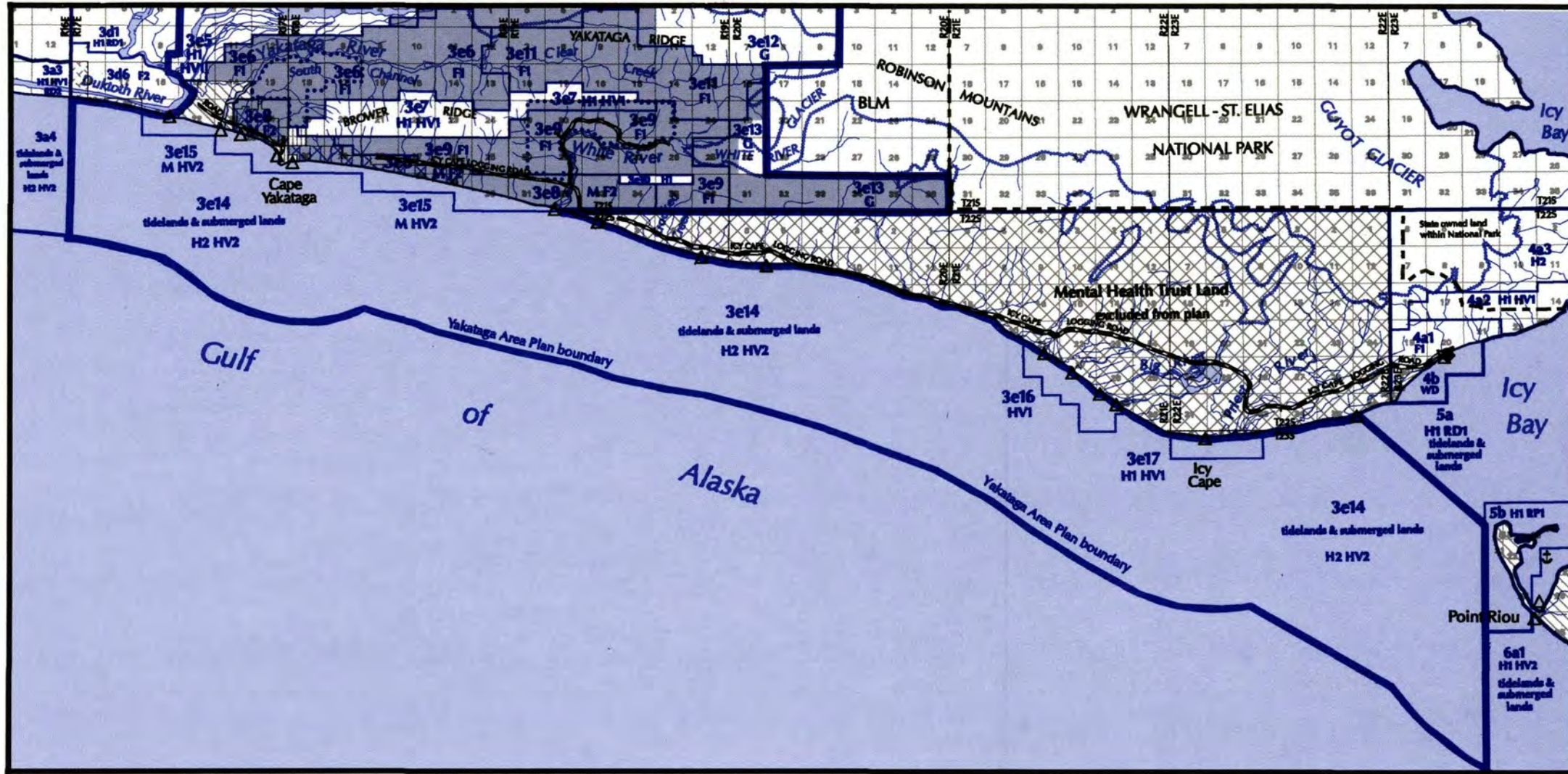
- △ anadromous fish stream mouth
- [Solid line] road
- [Wavy line] glacier margin





YAKATAGA AREA PLAN

**Unit 3E** southern part of Yakataga & White rivers - tidelands & submerged lands



**YAKATAGA AREA PLAN**

**Unit 3E** southern part of Yakataga & White rivers- tidelands & submerged lands

**PLANNING UNITS**

- management unit boundary
- subunit boundary and number

**LAND STATUS**

**STATE OWNED OR SELECTED: SUBJECT TO PLAN**

- NO PATTERN state owned - patented or tentatively approved
- state owned - University Timber Rights, substitute tract
- state owned - University Timber Rights, tracts 20 and 154
- state selected & Federal mining claims

**STATE OWNED BUT EXCLUDED FROM PLAN**

- University owned
- Mental Health Trust land

**OTHER LAND OWNERSHIP**

- Native owned - patented or interim conveyed
- LABELED federal (BLM, National Park)
- federal conservation system unit boundary
- private, including Native Allotments

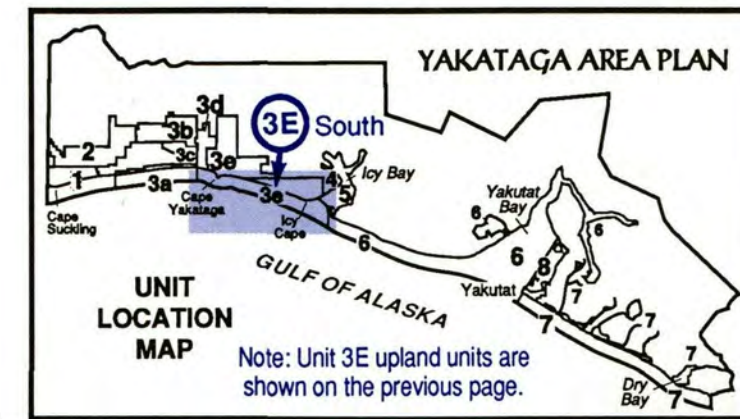
**MAP FEATURES**

- anadromous fish stream mouth
- road
- glacier margin

Note: The Yakataga Area Plan's 3-mile offshore limit is measured in nautical miles rather than statute (land) miles. One nautical mile is equal to 1.151 statute miles.



April 1995





Map 3.12

No-harvest riparian buffers on certain anadromous streams pursuant to December 1994 settlement agreement

