



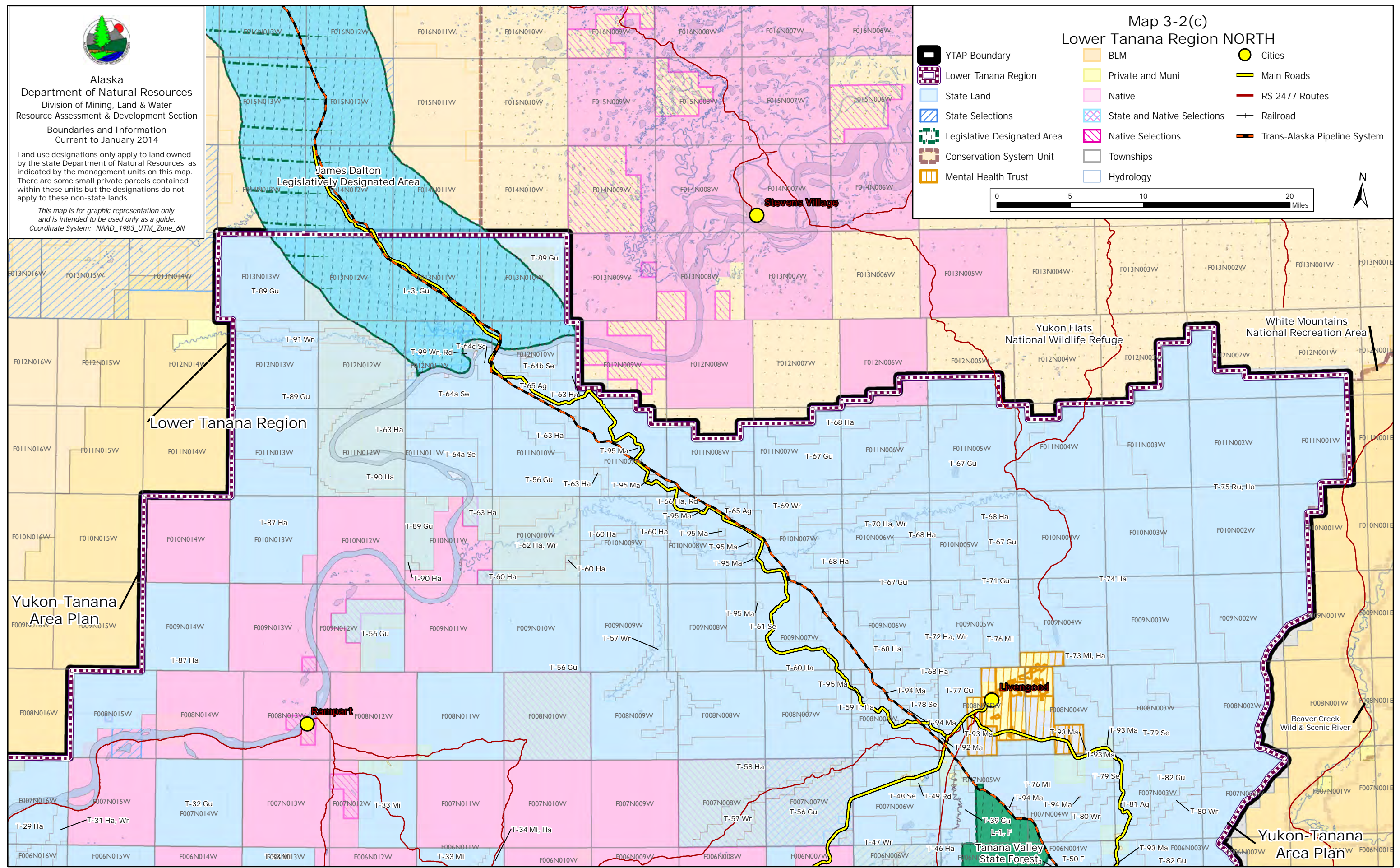
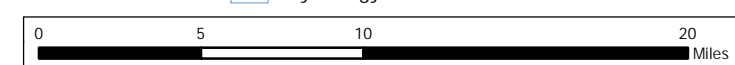
Alaska
Department of Natural Resources
Division of Mining, Land & Water
Resource Assessment & Development Section
Boundaries and Information
Current to January 2014

Land use designations only apply to land owned by the state Department of Natural Resources, as indicated by the management units on this map. There are some small private parcels contained within these units but the designations do not apply to these non-state lands.

This map is for graphic representation only and is intended to be used only as a guide.
Coordinate System: NAAD_1983_UTM_Zone_6N

Map 3-2(c) Lower Tanana Region NORTH

- YTAP Boundary
- Lower Tanana Region
- State Land
- State Selections
- Legislative Designated Area
- Conservation System Unit
- Mental Health Trust
- BLM
- Private and Muni
- Native
- State and Native Selections
- Native Selections
- Townships
- Hydrology
- Cities
- Main Roads
- RS 2477 Routes
- Railroad
- Trans-Alaska Pipeline System



Lower Tanana Region

Yukon-Tanana Area Plan

Rampart

Livengood

Tanana Valley State Forest

Yukon-Tanana Area Plan

Yukon Flats National Wildlife Refuge

White Mountains National Recreation Area

Beaver Creek Wild & Scenic River

James Dalton Legislatively Designated Area

Stevens Village