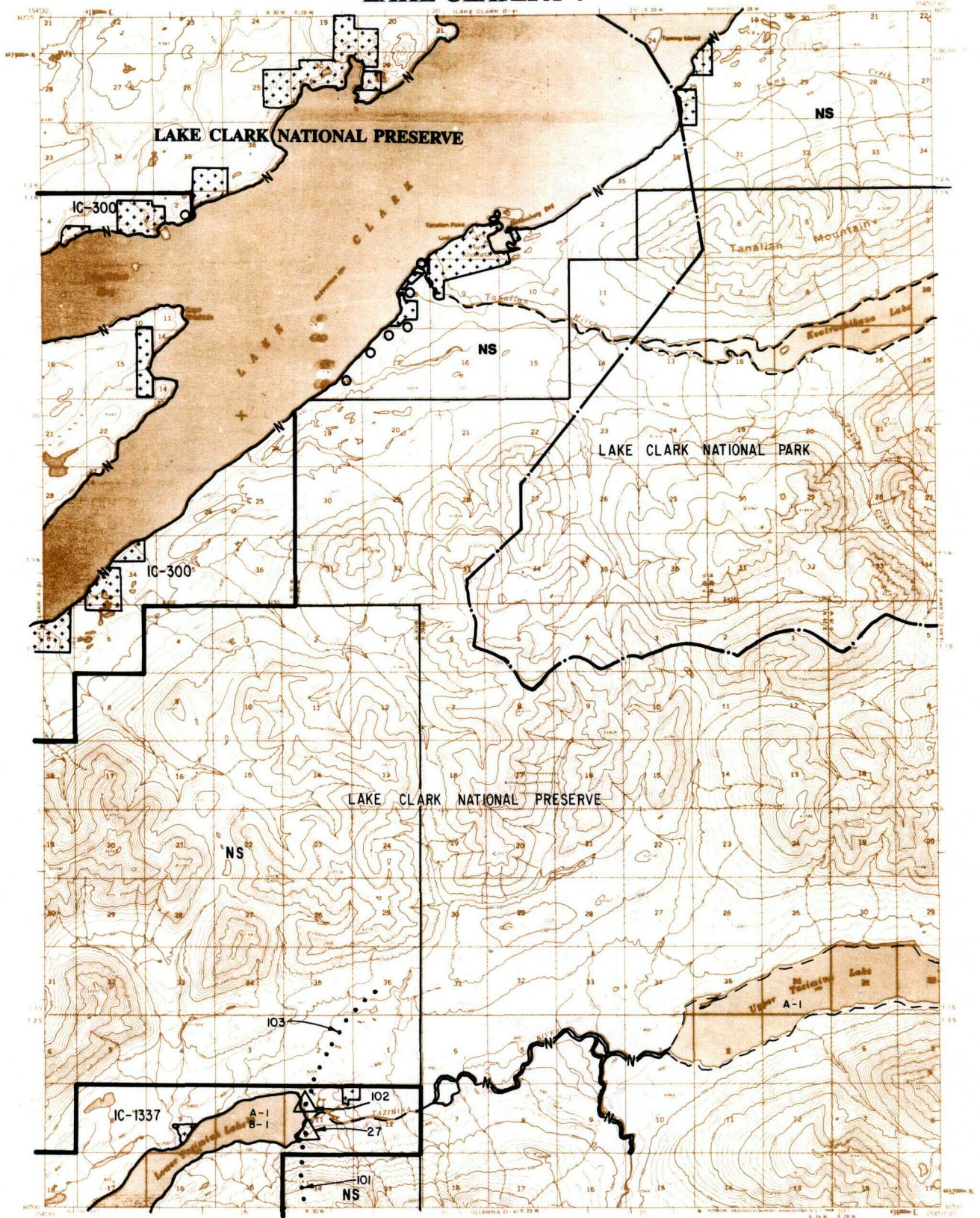


LAKE CLARK A-4



LEGEND

IC OR PAT. BDY.	FED. DETERMINED NAVIGABLE	NATIONAL CONSERVATION UNIT BDY.
WATER EXCLUSION BDY.	STATE DETERMINED NAVIGABLE	PENDING NATIVE ALLOTMENT
NS NATIVE SELECTION	SS STATE SELECTION	NATIVE & STATE SELECTION
STATE STATE OWNED	AIR STRIP EASEMENT	CAMPSITE / PARKING EASEMENTS
PRIVATE LANDS	EXISTING TRAIL EASEMENT	ROAD EASEMENT
		PROPOSED TRAIL EASEMENT

Scale in Miles
May 1990

RESERVED EASEMENTS

- EIN 27** A one-half (1/2) acre site easement on the left bank of Lower Tazimina Lake and the inlet of the Tazimina River, with an additional twenty-five (25) foot wide easement on the bed of the lake along the entire waterfront of the site.
- EIN 101** Proposed trail from the left bank of Lower Tazimina Lake, southerly to public land twenty-five (25) foot wide trail easement).
- EIN 102** A one-half (1/2) acre site easement on the right bank of Lower Tazimina Lake near the mouth of the Tazimina River with an additional twenty-five (25) foot wide easement on the bed of the lake along the entire waterfront of the site.
- EIN 103** Proposed trail from the right bank of Lower Tazimina Lake twenty-five (25) foot wide trail easement.