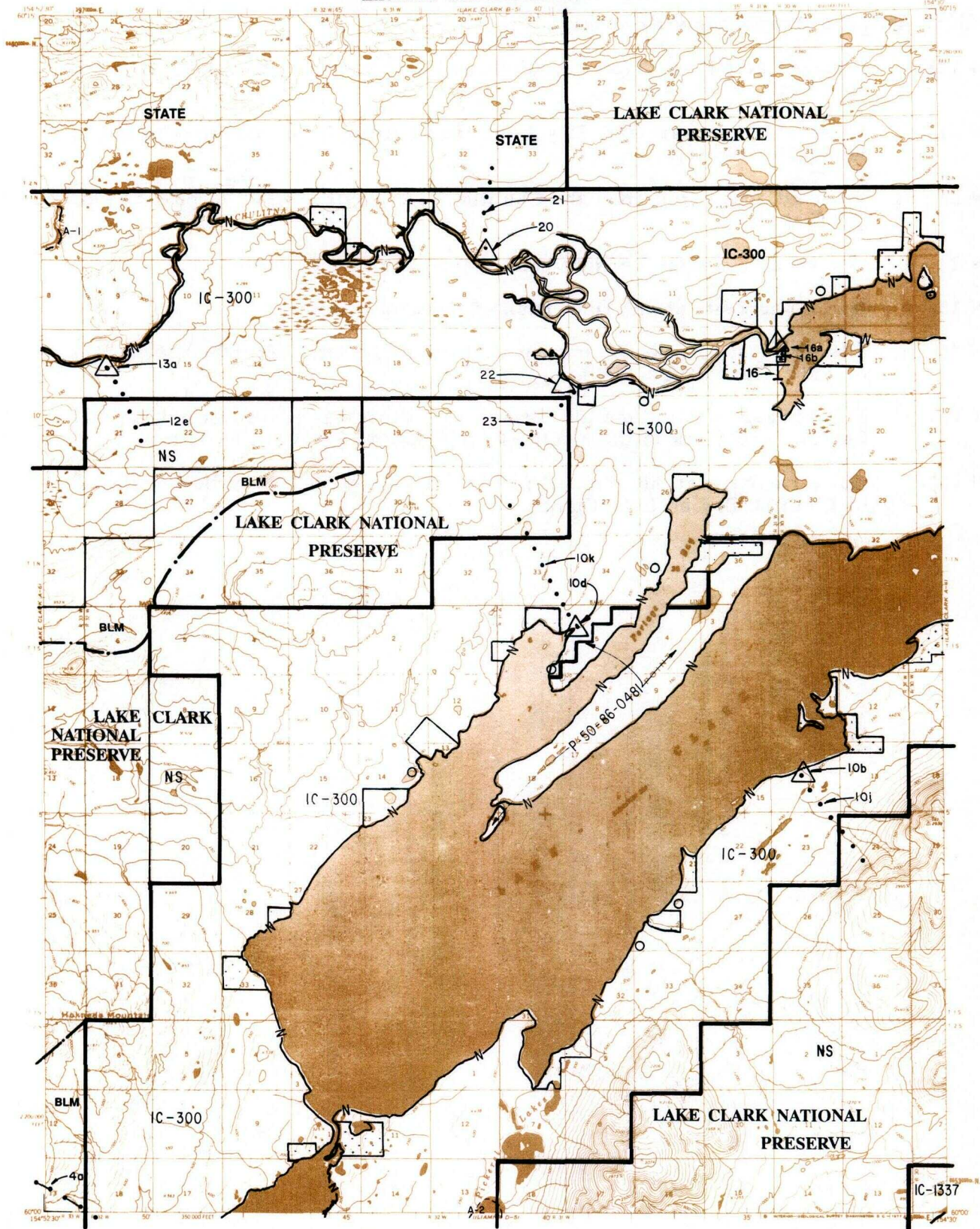


LAKE CLARK A-5



LEGEND

IC OR PAT. BDY.	FED. DETERMINED NAVIGABLE	NATIONAL CONSERVATION UNIT BDY.
WATER EXCLUSION BDY.	STATE DETERMINED NAVIGABLE	PENDING NATIVE ALLOTMENT
NS NATIVE SELECTION	SS STATE SELECTION	NATIVE & STATE SELECTION
STATE STATE OWNED	AIR STRIP EASMENT	CAMPSITE / PARKING EASEMENTS
PRIVATE LANDS	EXISTING TRAIL EASEMENT	ROAD EASEMENT
		PROPOSED TRAIL EASEMENT



RESERVED EASEMENTS

- EIN 4a Existing access trail from Nondalton northwesterly to public lands (25 foot trail).
- EIN 10b One (1) acre site near Flat Island on the southeast shore of Lake Clark.
- EIN 10d One (1) acre site near Portage Bay on the northwest shore of Lake Clark.
- EIN 10j Proposed access trail from EIN 10b near Flat Island on the southeast shore of Lake Clark southeasterly to public lands (25 foot trail).
- EIN 10k Proposed access trail from EIN 10d near Portage Bay on the northwest side of Lake Clark northwesterly to public lands (25 foot trail).
- EIN 20 One (1) acre site on the left bank of the Chulitna River.

continued next page

LAKE CLARK A-5 *Reserved Easements continued*

- EIN 12e** Proposed access trail from the Chulitna River southerly to public lands (25 foot trail).
- EIN 21** Proposed access trail from EIN 20 on the Chulitna River northerly to public lands (25 foot trail).
- EIN 23** Proposed access trail from the Chulitna River southwesterly to public lands (25 foot trail).
- EIN 22** One (1) acre site on the right bank of the Chulitna River.
- EIN 13a** One (1) acre site on the right bank of the Chulitna River.
- EIN 16** Site easement for a bush air strip on Turner Bay southwest of Chulitna Bay on Lake Clark (250 x 1500).
- EIN 16a** Existing access trail from the bush air on Turner Bay southwest of Chulitna Bay on Lake Clark to the mouth of the Chulitna River (50 foot trail).
- EIN 16b** One (1) acre site at the mouth of the Chulitna River on Turner Bay southwest of Chulitna Bay on Lake Clark.