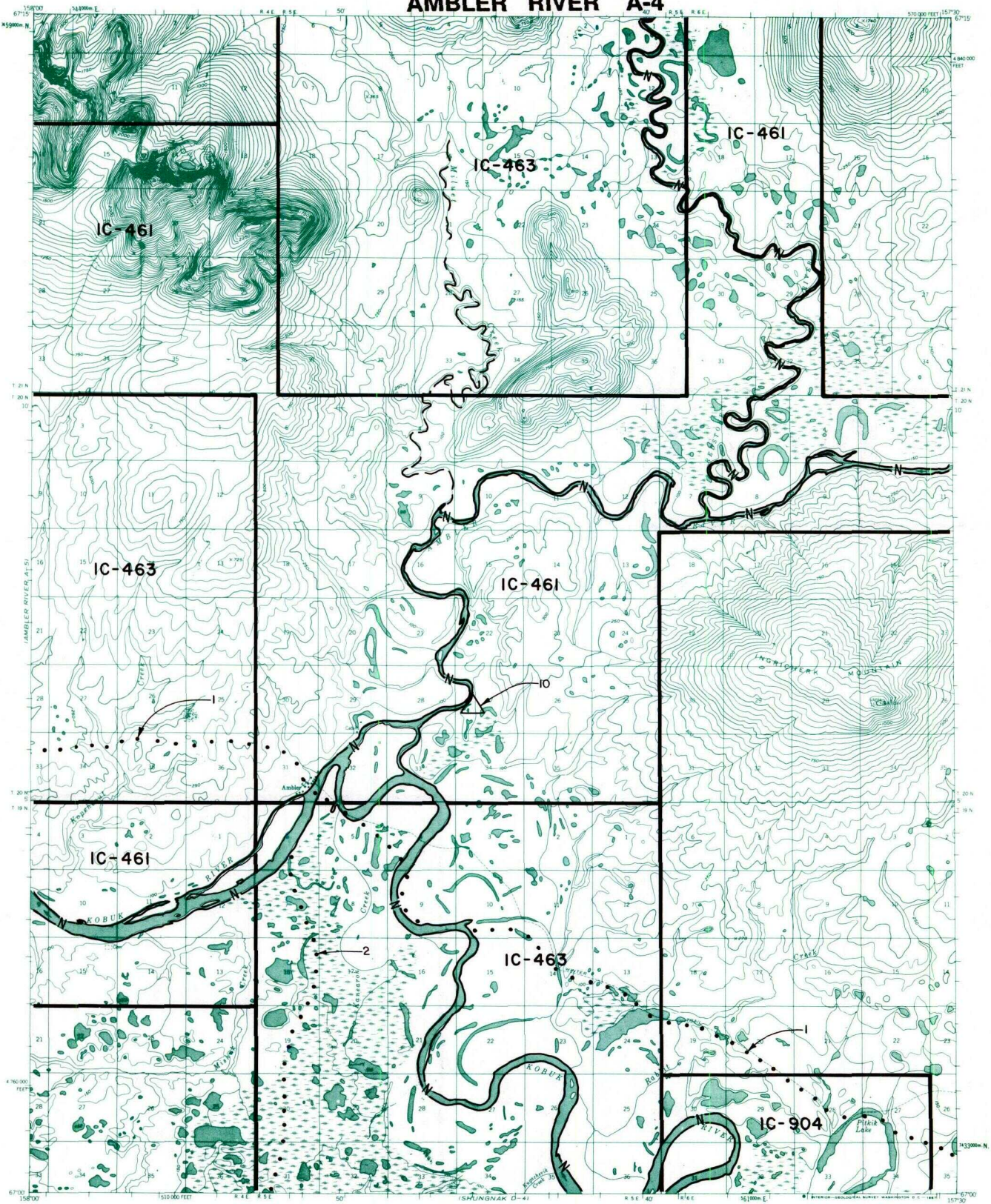


AMBLER RIVER A-4



- | | | |
|------------------------|--------------------------------------|-----------------------------------|
| — IC OR PATENT BDY. | — N — FEDERALLY DETERMINED NAVIGABLE | — · — NATIONAL PRESERVE LAND BDY. |
| — WATER EXCLUSION BDY. | — — STATE DETERMINED NAVIGABLE | • • • Δ EASEMENTS & ACCESS ROUTES |



RESERVED EASEMENTS

- EIN 1** An easement for an access trail twenty-five (25) feet in width from Section 18, T. 20 N., R. 3 E., K.R.M., southeasterly through Ambler to Shungnak and Kobuk. The season of use is limited to winter.
- EIN 2** An easement for an access trail twenty-five (25) feet in width from Ambler in Section 31, T. 20 N., R. 5 E., K.R.M., using the frozen Kobuk River, in part, then continuing southwesterly to public land. The season of use is limited to winter.
- EIN 10** A one (1) acre site easement upland of the ordinary high water mark in Section 27, T. 20 N., R. 5 E., K.R.M., on the left bank (looking downstream) of the Ambler River.