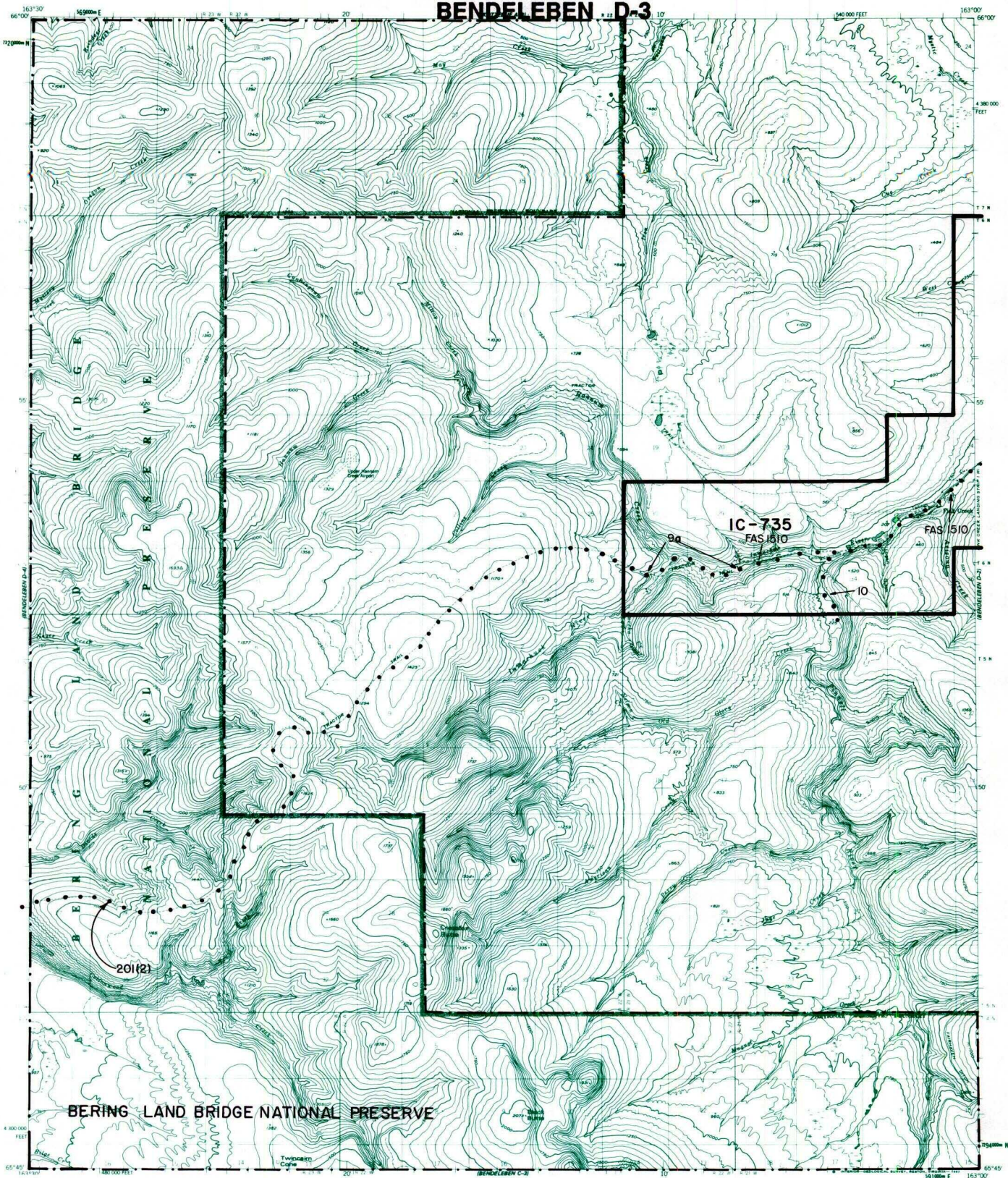


BENDELEBEN D-3



- IC OR PATENT BDY.
- N — FEDERALLY DETERMINED NAVIGABLE
- • — NATIONAL PRESERVE LAND BDY.
- WATER EXCLUSION BDY.
- - - STATE DETERMINED NAVIGABLE
- • • Δ EASEMENTS & ACCESS ROUTES



RESERVED EASEMENTS

- E IN 9a** An easement, twenty-five (25) feet in width, for an access trail, from the junction with FAS Route 1510 (Deering-Inmachuk Road), in Section 32, T. 6 N., R. 21 W., K.R.M., westerly to public land.
- EIN 10** An easement fifty (50) feet in width for an access trail from FAS Route 1510 in the NW 1/4, Section 34, T. 6 N., R. 21 W., K.R.M., southerly, generally paralleling the Pinnell River to public land. Large all-terrain vehicles (Greater than 3,000 lbs Gross Vehicle Weight), track vehicles, and four-wheel drive vehicles are limited to winter use only.
- FAS 1510** Omnibus Road Easement extending 50 feet on each side of the centerline of the Deering-Inmachuk Road from Deering village airstrip southwest along Inmachuk River to the Fink Creek mining area.
- 201(2)** Statutory easement extending 100 feet on each side of the centerline of a trail from Deering southwest to the Taylor Highway during periods of adequate snow cover. Reserved pursuant to Section 201(2) of ANILCA (Public Law 96-487).