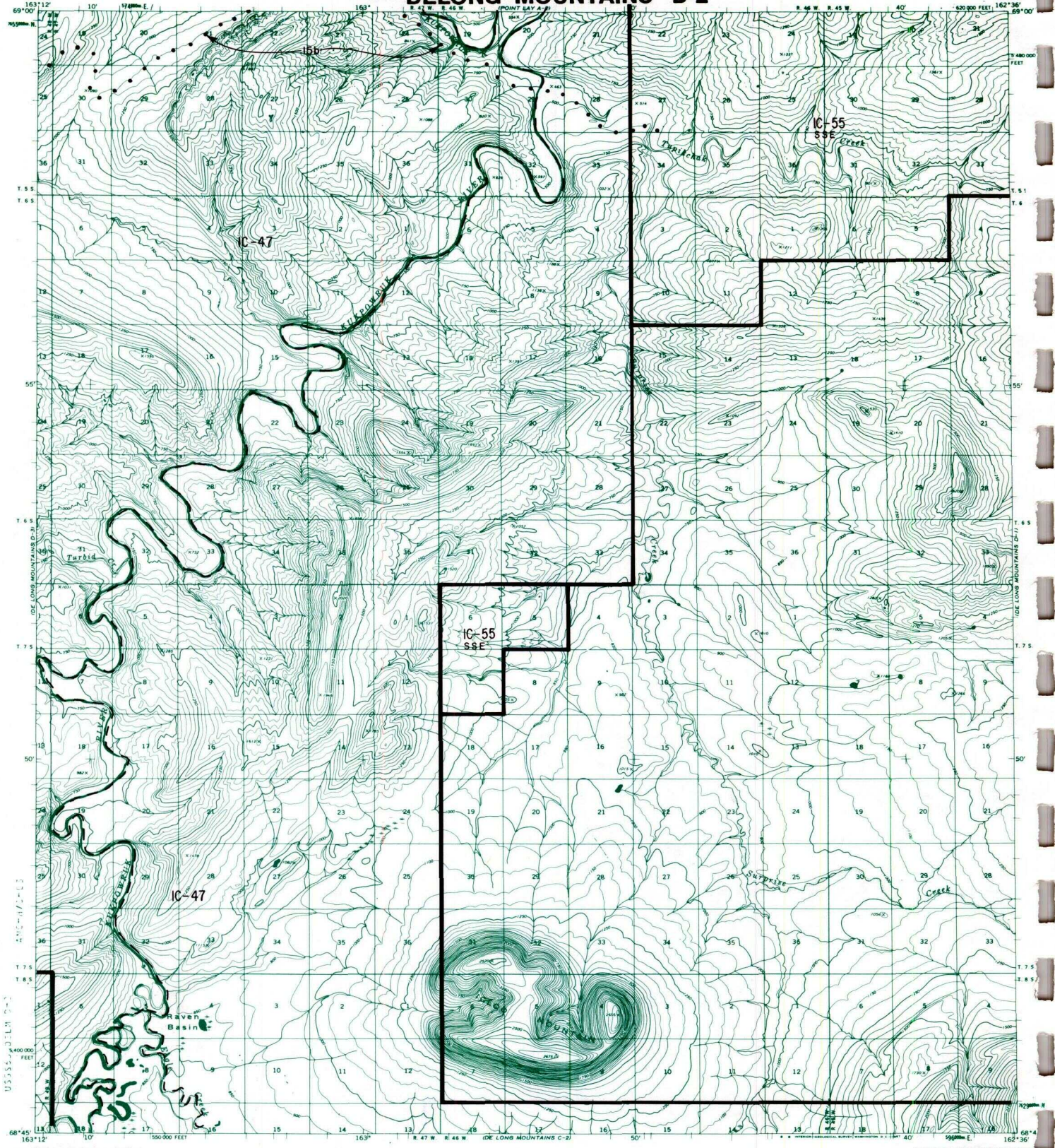


DELONG MOUNTAINS D-2



IC OR PATENT BDY.	FEDERALLY DETERMINED NAVIGABLE	NATIONAL PRESERVE LAND BDY.
WATER EXCLUSION BDY.	STATE DETERMINED NAVIGABLE	EASEMENTS & ACCESS ROUTES

Scale in Miles
May 1988

RESERVED EASEMENTS

EIN 15b

A fifty (50) foot trail easement for use by the public to gain access to and from public land southerly boundary of the military withdrawal (Public Land Order 3780) in T. 5 S., R. 50 W., U.M., following Kahkatak Creek easterly to public land.