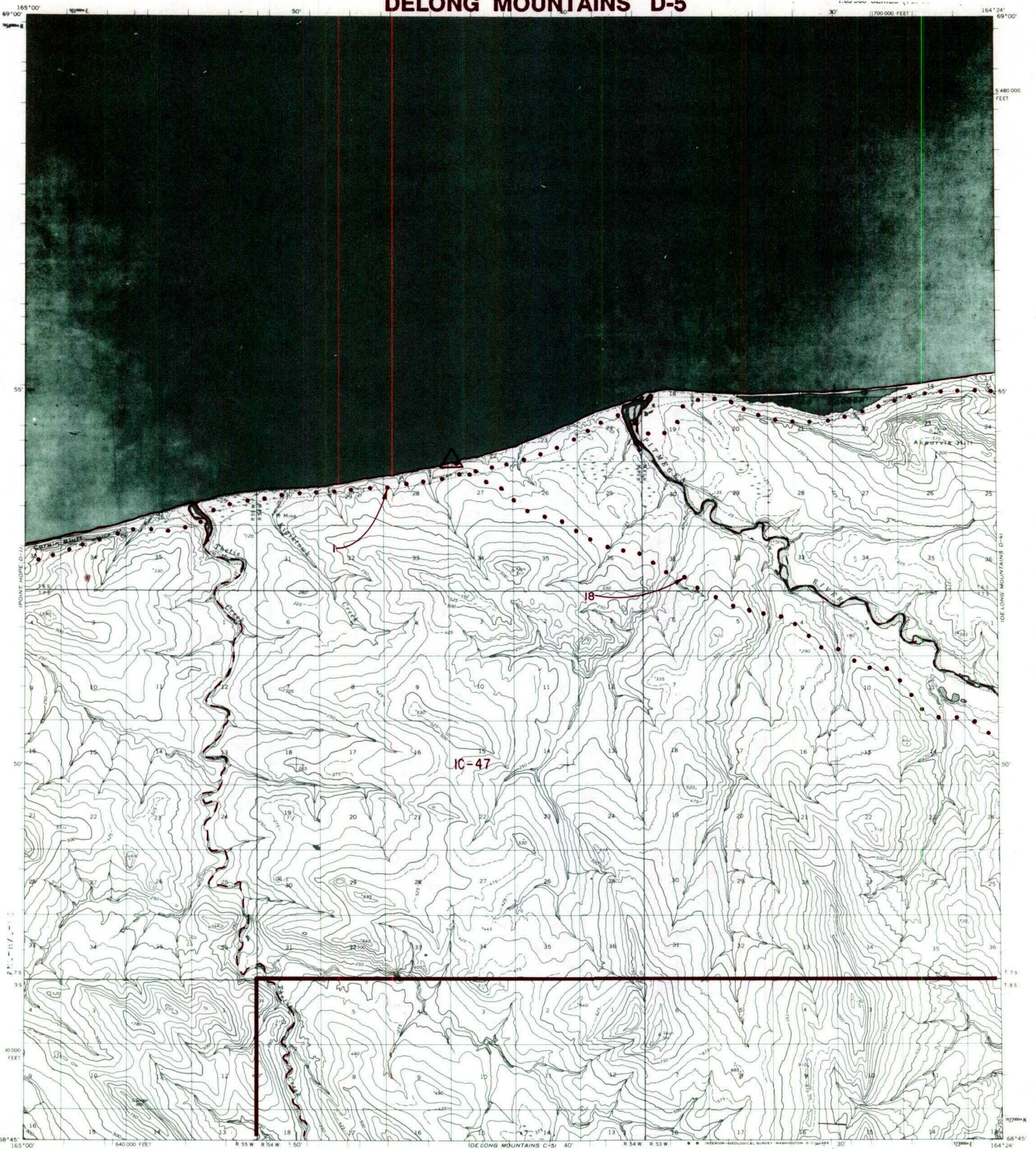


# DELONG MOUNTAINS D-5



- IC OR PATENT BDY.
- FEDERALLY DETERMINED NAVIGABLE
- NATIONAL PRESERVE LAND BDY.
- WATER EXCLUSION BDY.
- STATE DETERMINED NAVIGABLE
- EASEMENTS & ACCESS ROUTES

0 1 2  
Scale in Miles  
May 1988

## RESERVED EASEMENTS

- EIN 1** A twenty-five (25) foot trail easement for use by the public to gain access to and from public land via the existing winter trail along the coast between Barrow and Kotzebue.
- EIN 18** A trail easement fifty (50) feet in width for use by the public to gain access from the Arctic coast near Cape Sabine southeasterly to and from public land along the Pitmegea River, with a five (5) acre site easement on the coast, located in Section 22, T. 6 S., R. 54 W., U.M., for use by the public as a beaching area for access to public land.