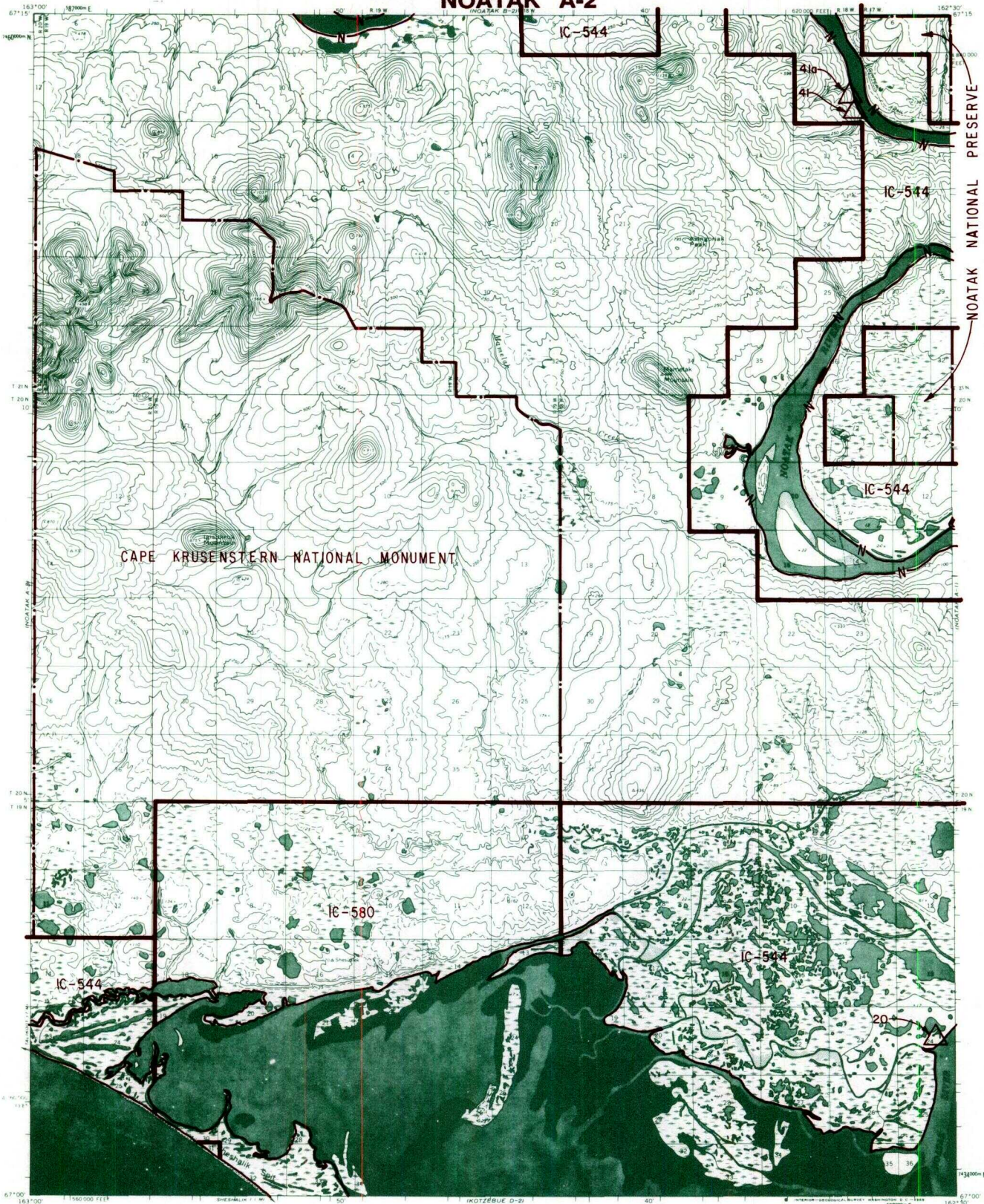


NOATAK A-2



- | | | |
|----------------------|--------------------------------|-----------------------------|
| IC OR PATENT BOY. | FEDERALLY DETERMINED NAVIGABLE | NATIONAL PRESERVE LAND BOY. |
| WATER EXCLUSION BOY. | STATE DETERMINED NAVIGABLE | EASEMENTS & ACCESS ROUTES |



RESERVED EASEMENTS

- EIN 20** A one (1) acre site easement upland of the ordinary high water mark in Section 24, T. 19 N., R. 18 W., K.R.M., on the right bank (looking downstream) of the Noatak River.
- EIN 41** An easement twenty-five (25) feet in width for an access trail from the right bank (looking downstream) of the Noatak River in Section 7, T. 21 N., R. 17 W., K.R.M., southwesterly to public land.
- EIN 41a** A one-quarter (1/4) acre site easement upland of the ordinary high water mark in Section 7, T. 21 N., R. 17 W., K.R.M., on the right bank (looking downstream) of the Noatak River. No overnight camping is permitted.