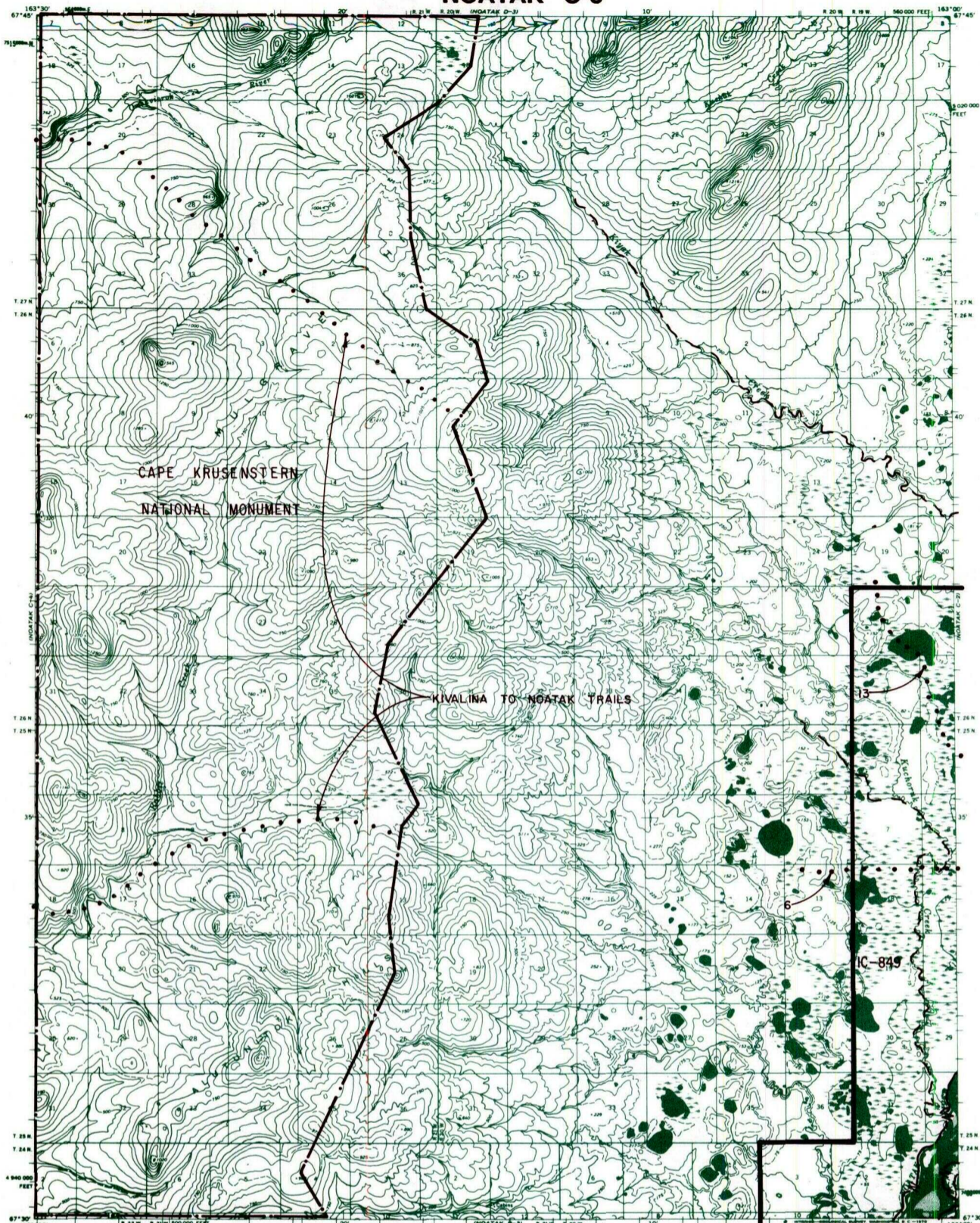


NOATAK C-3



IC OR PATENT BDY.	FEDERALLY DETERMINED NAVIGABLE	NATIONAL PRESERVE LAND BDY.
WATER EXCLUSION BDY.	STATE DETERMINED NAVIGABLE	EASEMENTS & ACCESS ROUTES

Scale in Miles
May 1988

RESERVED EASEMENTS

- EIN 6** An easement for an access trail, twenty-five (25) feet in width, from Noatak in Sections 9 and 16, T. 25 N., R. 19 W., K.R.M., westerly to public land.
 - EIN 13** An easement for an access trail, twenty-five (25) feet in width, beginning in Section 9, T. 25 N., R. 19 W., K.R.M., northwesterly to public land. The season of use is limited to winter.
- National Park Service Kivalina to Noatak trails.