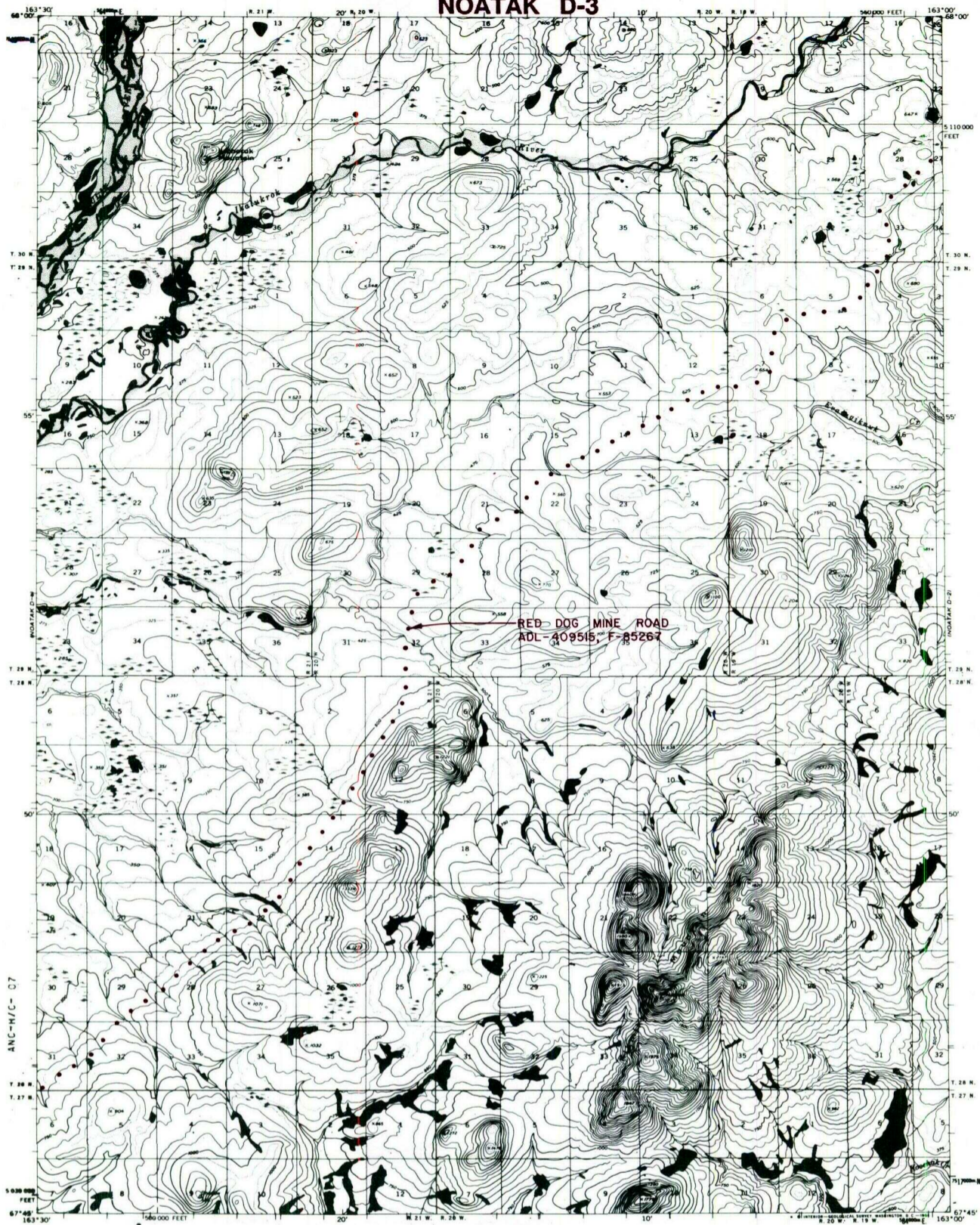


# NOATAK D-3



- |                               |   |  |
|-------------------------------|---|--|
| <b>—</b> IC OR PATENT BDY.    | <b>—N—</b> FEDERALLY DETERMINED NAVIGABLE | <b>— · — · —</b> NATIONAL PRESERVE LAND BDY. |
| <b>—</b> WATER EXCLUSION BDY. | <b>- - -</b> STATE DETERMINED NAVIGABLE   | <b>• • • • Δ</b> EASEMENTS & ACCESS ROUTES   |



## RESERVED EASEMENTS

**ADL 409515 (F 85267)** Public right-of-way for transportation corridor and 250 foot wide access roads to material sites; right-of-way is 600 feet in width from the Chukchi Sea beginning in T. 25 N., R. 24 W., K.R.M., thence northeasterly to the Red Dog Mine.