

# RECREATION

---

## RESOURCE DESCRIPTION

The lands now designated as the Moose Range have been used by the public for dispersed recreational activities for years. The recreational land base of the area is extensive, including several large river valleys and small streams traversing diverse vegetation, geological and wildlife habitat types. The outstanding mountain scenery and scenic views of Castle Mountain and Granite Peak are some of the many valuable recreational resources (see Map 6, page 39).

The abundance of wildlife in the Moose Range make the area popular for hunting of moose, black and brown bear, Dall sheep, varying hare, grouse, and ptarmigan; trapping of a variety of furbearers; and wildlife viewing. Fishing for salmon, Dolly Varden and rainbow trout is popular in the streams. Dolly Varden, grayling and/or rainbow trout are also caught in Seventeen Mile, Wishbone, Fish and Chain Lakes.

Hiking, horseback riding, cross-country skiing and snowmachining extend into the most remote areas of the Moose Range. Two, three and four-wheel driving and off-road vehicle use are common on Permanente Road, Buffalo Mine Road, old mining roads near Sutton and along Boulder Creek. Whitewater kayaking and rafting is popular on the Chickaloon River. Kings River and Moose Creek both have potential for expert level kayaking. Fossil hunting and rock collecting are popular along Moose Creek, the north side of Wishbone Hill, Chickaloon River and Boulder Creek. Recreational gold panning and dog mushing also occur in the Moose Range along the Chickaloon River.

These dispersed activities generally occur along the existing complex network of trails within the Moose Range. The most popular trails are the Permanente Road, the Chickaloon-Knik-Nelchina Trail, the Chickaloon River Trail, the Boulder Creek Trail and the Young Creek trails. Several old mining roads between Moose Creek and Seventeen Mile Lake are used frequently. For more information about trails see the Transportation and Access section in Chapter Two on page 50.

## RESOURCE EVALUATION

People participate in dispersed recreational opportunities on public lands which are readily accessible. Presently, recreational use of the Moose Range is low-to-moderate due to the lack of access, the lack of information available describing a legal public access and the existing trail conditions. In some cases, historic trails, such as the Chickaloon-Knik-Nelchina Trail, are underneath subdivision roads and public access is blocked by private landowners. Currently, no user fees are being imposed by private landowners.

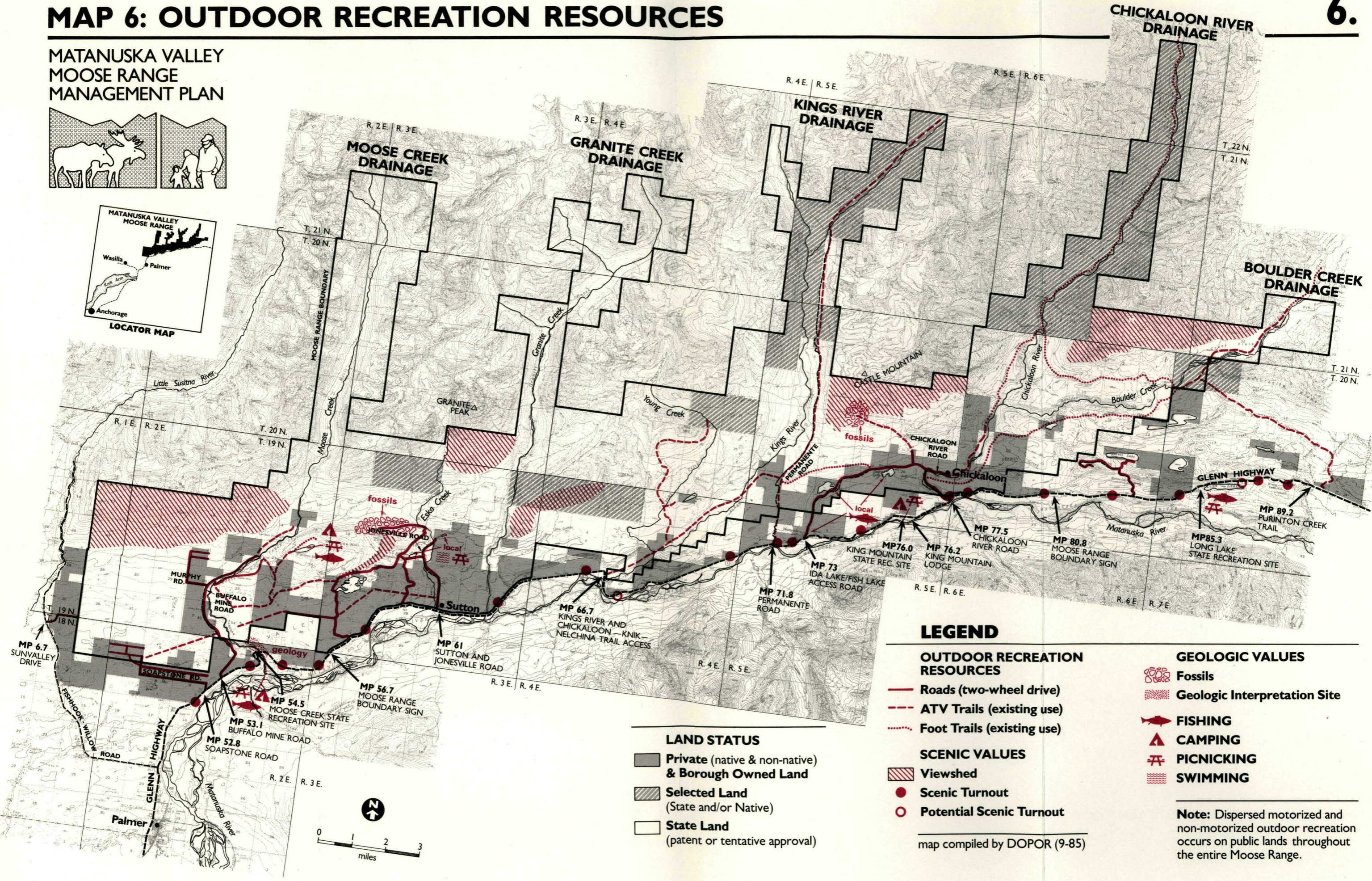
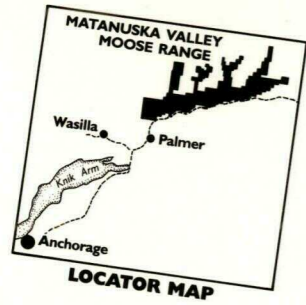
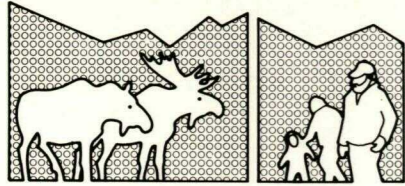
## RECREATION

Overall the public use of the area is infrequent, with small groups using the Range for recreation on a limited basis. The public involved in the planning process feels that public recreational use should be allowed to continue as long as it does not adversely effect state efforts to maintain, improve and enhance wildlife populations, particularlyly moose. The public prefers to keep the area like it is, providing opportunities for rugged, natural backcountry experiences. Peak use of the Range occurs during the fall hunting season.

The state tourism industry can also be supported by maintenance of the scenic view of the Moose Range from the adjacent Glenn Highway. The traveling public is drawn to the Chickaloon Area for the scenic splendor of Castle Mountain and towards Sutton for views of Granite Peak. Views of the Chugach Range to the south are also spectacular. Overall, the rugged mountain scenery along this portion of the Glenn Highway is some of the finest the state has to offer (see Map 6, page 39).

# MAP 6: OUTDOOR RECREATION RESOURCES

## MATANUSKA VALLEY MOOSE RANGE MANAGEMENT PLAN



### LEGEND

- OUTDOOR RECREATION RESOURCES**
- Roads (two-wheel drive)
  - - - ATV Trails (existing use)
  - ⋯ Foot Trails (existing use)
- SCENIC VALUES**
- ▨ Viewshed
  - Scenic Turnout
  - Potential Scenic Turnout

- LAND STATUS**
- Private (native & non-native) & Borough Owned Land
  - ▨ Selected Land (State and/or Native)
  - State Land (patent or tentative approval)

- GEOLOGIC VALUES**
- 🦴 Fossils
  - 🗺️ Geologic Interpretation Site
- FISHING**
- 🎣 **CAMPING**
- 🏕️ **PICNICING**
- 🏊 **SWIMMING**

**Note:** Dispersed motorized and non-motorized outdoor recreation occurs on public lands throughout the entire Moose Range.

map compiled by DOPOR (9-85)

